

How to make an older picture.

In this tutorial we are going to convert a photograph into a old photo, it is not tough now because you have a golden chance to learn this effect by my this example. It is fully step by step described.

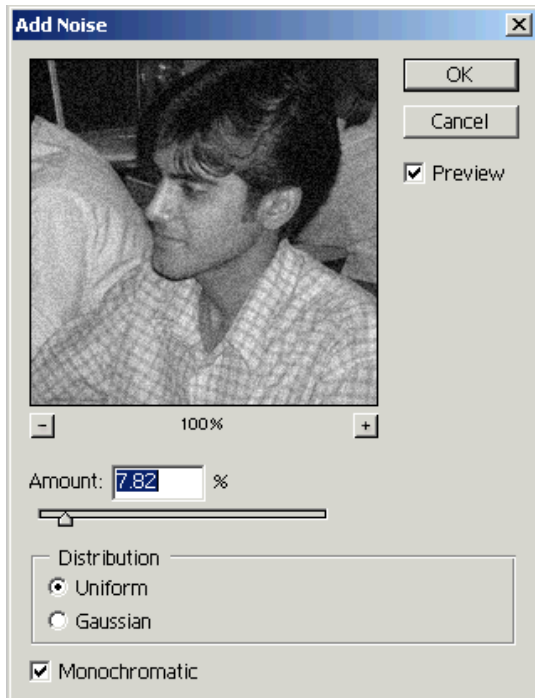
Open a Picture: First we have to open a picture to given a older picture effect.



Grayscale: Grayscale is used to make color less picture so apply it, go to Image menu > Mode > Grayscale.



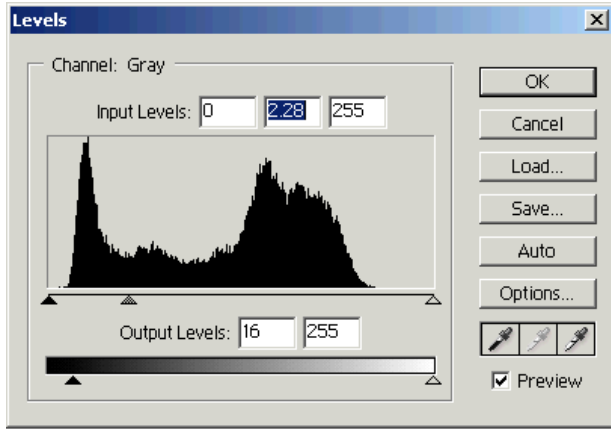
Noise: Go to Filter Menu > Noise > Add Noise and make adjustment as here.



Gaussian Blur: Go to Filter Menu > Blur > Gaussian Blur and make adjustment as I have done here.



Levels: We can give sharp effect to the picture by the levels option so go to Image Menu > Adjustment > Level and make adjustment as given here.




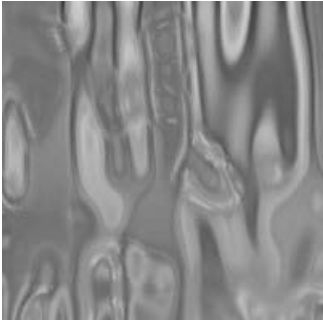
Final image

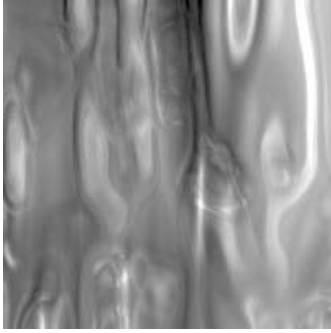


Create a Realistic Water from the Tap

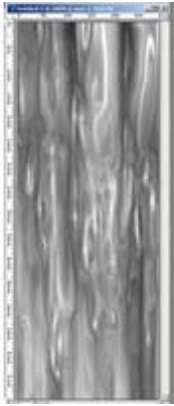
Description: Through this tutorial, we will learn how to use a combination of photoshop filters to create a realistic effect of water running from a tap.

Requires Photoshop CS2 or later

	<p>Let's start with a new document 500x500 pixels</p> <p>Press "D" to reset your color palletes to black and white.</p> <p>Create a new layer, then apply the following filter: Filter->Render->Clouds</p>
	<p>Apply: Filter->Blur->Gaussian Blur Set: 6</p> <p>Apply: Filter->Blur->Motion Blur Set: Angle: 90, Distance: 80</p>
	<p>Now go to Image->Image Size Set: width: 300pixels (UNTICK the "Constrain Proportions" option) then click ok. So now your document should be 300 width and 500 high.</p>
	<p>Next, go to Filter->Artistic->Plastic Wrap Set: Highlight Strength: 15, Detail:10, Smoothness:10</p> <p>Apply Filter->Sketch->Chrome Set: Detail:0, Smoothness: 8</p>



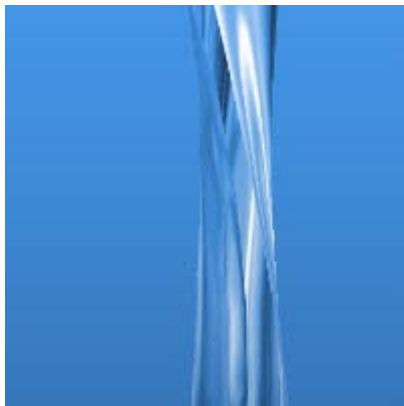
Go to **Edit->Fade Chrome**
Set: Opacity:100%, Mode: Hard Light



Now go to **Image->Image Size**
Set: height:800 pixels, leave all other settings, and make sure the "Constrain Proportions" is NOT checked.



Now go to **Edit->Transform->Warp**
Move the anchors around, inward, up and down, just play with it to shape it like running water.



Now, just add some gradient color to the background layer, and change it's water layer's blending mode to "Hard Light"

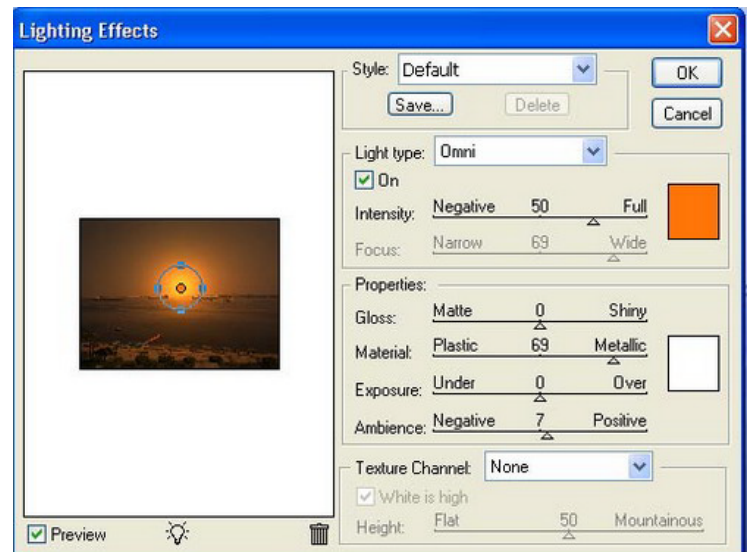
Create a Sunset from a Day Picture

Sunset is a beautiful scene that is not easy to catch on cam. What if you have morning image and you want to convert it to a beautiful sunset scene? I've seen many tutorials that use Photoshop Match color command. Here is another way that will give you beautiful and more realistic result.

1. Open your image in Photoshop.
2. Choose the Background layer in the Layers window, click (Ctrl+J) to duplicate it and rename the new layer to "Sunset".
3. Choose the Sunset layer, click Filter > Render > Lighting Effects.
4. Choose Omni for the Light type, set the Intensity value to 50, change the color to ff7608 by clicking the default color at the right of the Intensity slider and entering ff7608 at the bottom text box of the color picker and clicking Ok.
5. Change the Ambience value to 7, resize the light source by dragging the handles also move it close to the sea like the next image.



6. Create a new layer by clicking "Create a new layer" icon located at the bottom of the Layers window and rename the new layer to "Light".
7. Select the new layer, choose the "Rectangular marquee tool" (M) and draw a rectangle from the end of the sun to the beach.
8. Click "Set foreground color" and use the color picker to select the color from the sun center.
9. Click Edit > Fill, choose "Foreground color" and click Ok.



10. Click Edit > Transform > Distort and drag the handles to make it look like the following image.



11. Change the "Light" layer from Normal to Overlay from the top of the Layers window.
12. Click Filter > Blur > Motion blur, enter -45 for the Angle, 129 for the Distance and click Ok.
13. Select the Light layer and change its Opacity to 44%.

The morning image:



The sunset image:

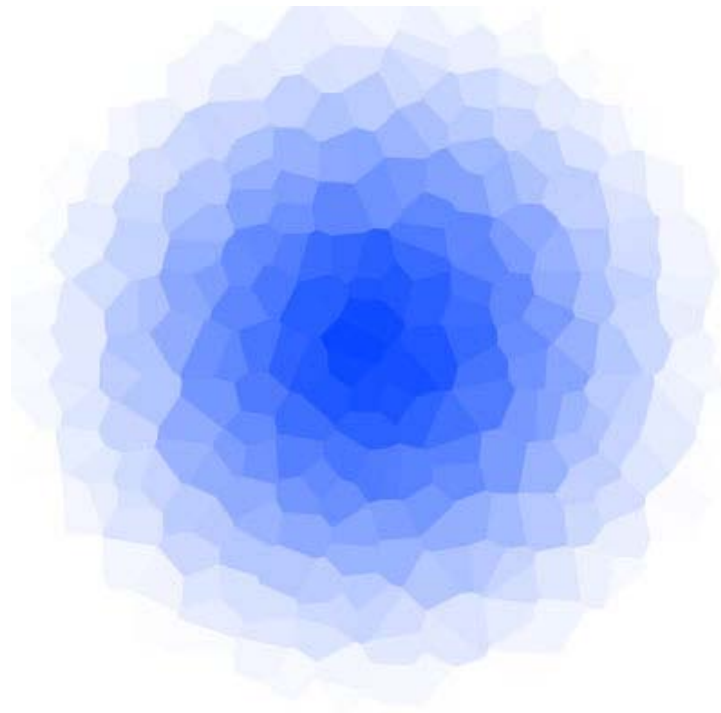


Create a Cracked Ice

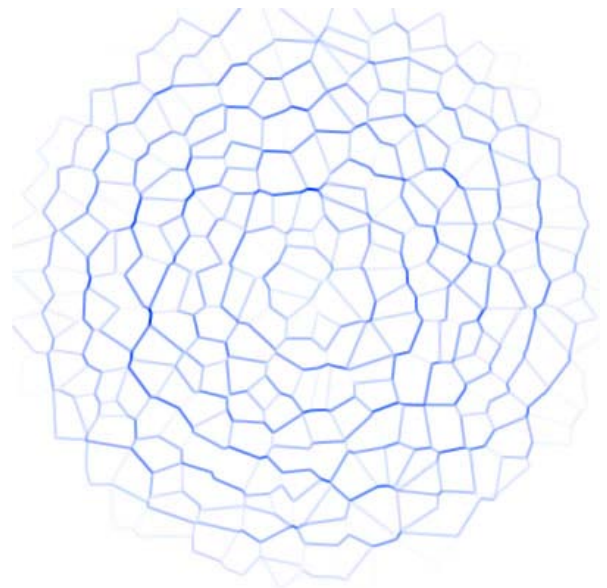
1. Create a new document 400x400 pixels with white background. Press D to reset colors to black and white.

2. Select another foreground color instead of black, I've chosen blue (like ice :). Then select the gradient tool and the radial gradient. Make a gradient from the middle of the document to the bottom. You should now have a circle shaped gradient.

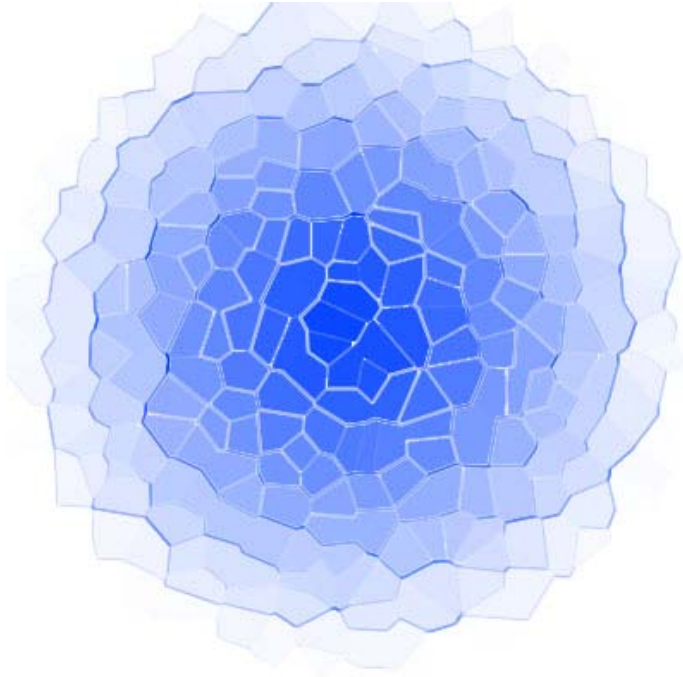
3. Go **Filter > Pixelate > Crystallize** and choose a cell size of 30 pixels. Now your picture should look like this:



4. Right click on the layer in the layers panel and duplicate it. On the new layer go **Filter > Stylize > Find Edges** and your picture should look like this:



5. Chose the "Magic Wand Tool" and select Anti-aliased and unselect contigious. Have the tolerance at 0-20, i used 0 but i think around 10 makes the best result. Click on the white area and press delete delete. Now your picture should look like this:

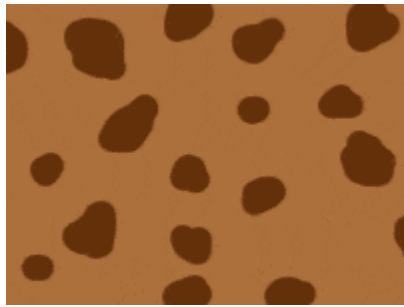


6. Go **Filter > Blur > Blur** to make the edges just a little bit smoother.

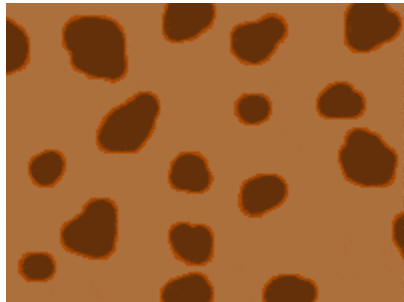
7. You are now finished!
Your result should still look very much like the pic above. To change color make

it all to one layer by going **Layer > Flatten Image**. Press **Ctrl + U** to bring up the Hue/Saturation settings then change color. If you want to make it look like some sort of alien egg just invert with **Ctrl + I**.

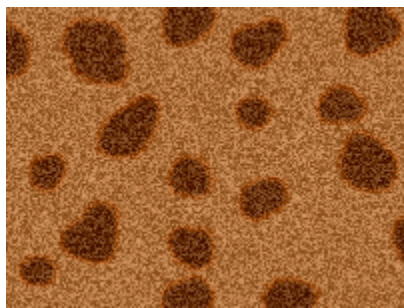
Description: In this tutorial, we will create some fur texture with spots.



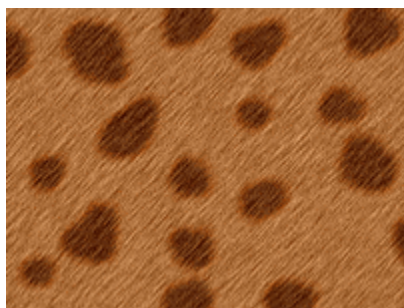
- Start a new document.
- Fill the background with **#AC703D**
- Set your foreground color to **#64300A**
- **Create a new layer**, and use hard edge brush and paint your spots. similar to mine.



- Now apply a 1px stroke to the spots. (**Layer> Layer Style->Stroke**) Stroke color: **#B14D03**
- Now Flatten the image: **Layer->Flatten Image**.



- Now go to **Filter->Blur->Gaussian Blur**: set **1px**
- Now add some noise: **Filter->Noise->Add Noise**. Amount: **15%**. Distribution: **Uniform**. Monochromatic: **Checked**



- Now add some motion blur: **Filter->Blur->Motion Blur**: Angle: 45. Distance: 6

Description: This is a simple tutorial to show you some techniques on how to create some nice borders for your images.

To start off, open the image you want to edit (be sure to make a back up of it first, we dont want to lose the original)

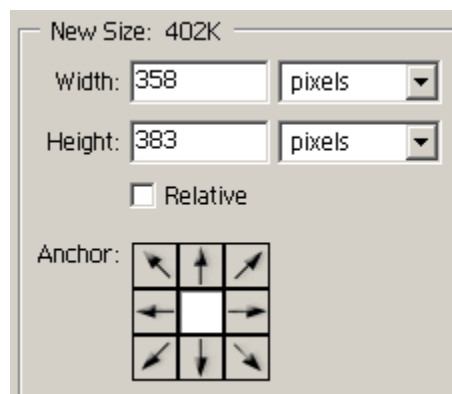
Here is mine. if you want to use this image, you can downloadit [HERE](#)



Press "D" to reset your color palette back to black and white.

Now go to **Image->Canvas Size.**

For the width and height, add 30 pixels to the current size. so here is my current size



so i'll add 30 to the width: = 388, and for height = 413. What we are doing here is making the canvas bigger than the current image, hence, enough room for the border.

for the Anchor section (above image), leave it at default (center square selected), then click OK.

Now I have a white border



Now use your rectangle selection tool and make a selection of your image, about 10 - 20 pixels smaller than the actual image. see below.



Now go to Select->Inverse to inverse your selection. Now what you got selected is the outer border of the image.

Now go to Select->Feather and enter 4. This will soften the edges.

Now it's time to add some cool edging effects.

Go to Filter->Sketch->Torn Edges.

Now what you enter here is totally up to you. I set mine at: Image balance: 50, Smoothness: 5,



Contrast: 20, and here's what I got:

You can play around with OTHER filters to get different edging effects, here are a few:

Filter->Distort->Ocean Ripple



Filter->Sketch ->Chalk &Charcoal



Cartoon Drawing Photoshop Images Effect

1. Open an image that you would like to manipulate. Make sure your image is in RGB mode. To check this, go to Image under the menu bar - Mode - RGB Color. Make a duplicate of this layer as you will be working on this layer going forward.



2. Now we will be applying the Poster Edges filter. To do this, go to Filter > Artistic > Poster Edges.

3. After the Poster Edges effect, we will Adjust the Brightness & Contrast with the values: Brightness Value: 10 Contrast: 30.



4. Now we will do an artistic cut out effect to give it that cartoon look. Go to Filter > Artistic > Cut Out. And this is what you get!

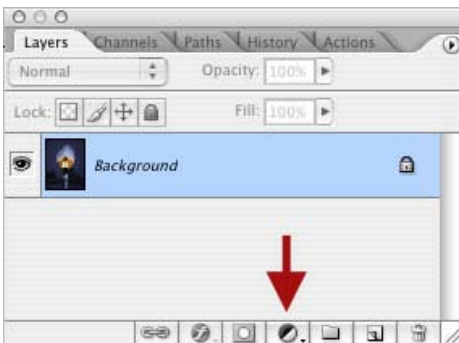


Snowing Photoshop Images Effect

1. Open an image that you would like to manipulate. Make sure your image is in RGB mode. To check this, go to Image under the menu bar - Mode - RGB Color.
Make a duplicate of this layer as you will be working on this layer going forward.



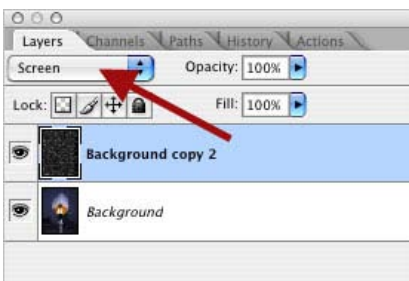
2. Now we will apply a "Pointilize Filter" To do this go to **Filter > Pixelate > Pointilize Filter**
Select cell size to 6.



3. We will have to adjust the Threshold. Open your Layers Palette by going to **Windows > Layers**. Select the layer and click on the threshold icon. Set the level to 255.

4. After you have done this, Merge the threshold layer with the duplicated layer.

5. Change the layer blend to screen as illustrated below.



5. At this stage we will apply a "Motion Blur". To do this go to **Filter > Blur > Motion Blur**. Use angle of -45 and distance of 15.